

Pipe welding positioners MOST MPP



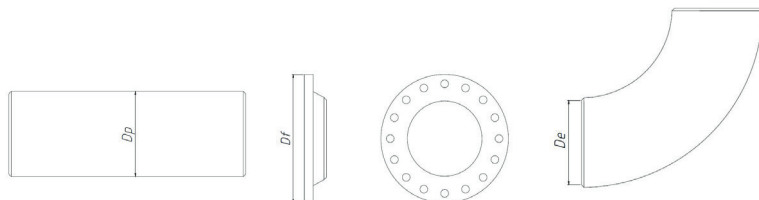
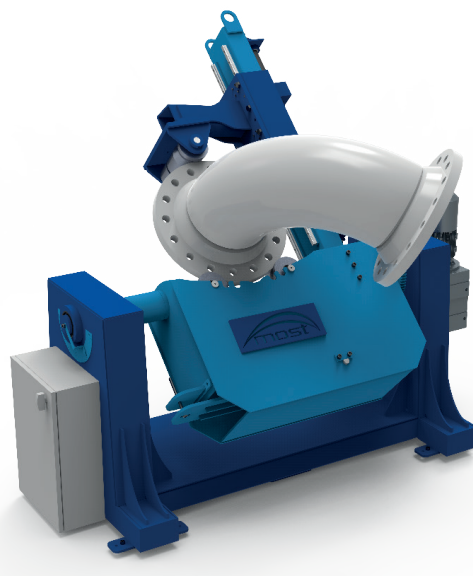
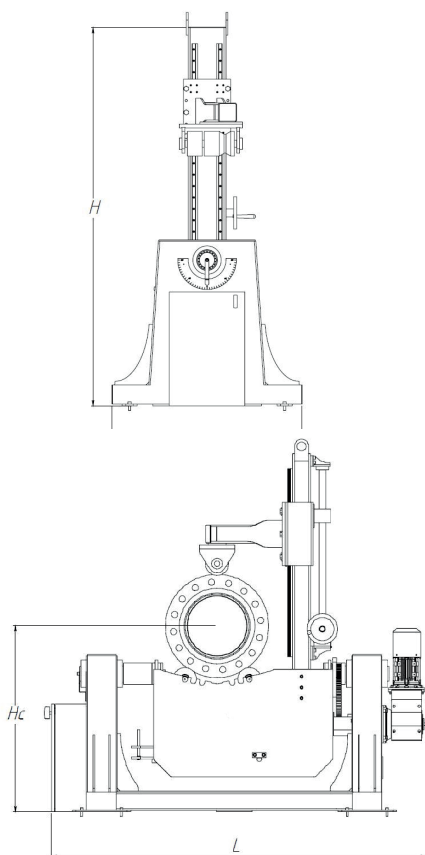
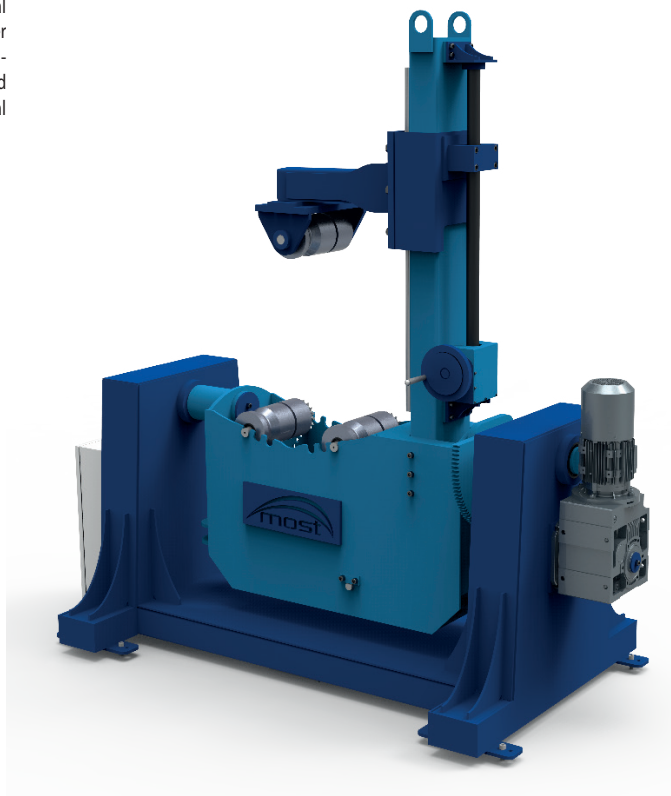
Pipe welding positioners series MPP are designed for rotating, tilting and positioning of cylindrical objects when handling or automatic welding. Particularly used in manufacturing processes of water pipe (prefabrication and assembly), or central heating elements. Pipe welding positioners greatly reduce costs and increase the quality of welds by mitigating defects. Auxiliary operations were reduced to minimum; welds are always done in the most desirable position. Perfect solution for both manual welding, and automated manufacturing processes.

Applications:

- pipes, pipe elbows, pipe flanges and others.

Main features:

- adjustable steeples rotation speed,
- quick and precise centering and clamping,
- wide range of diameter and weight of pipes,
- possible to centre pipes of equal diameter,
- rotating and tilting can be activated at the same time.



Model	Rated load capacity [t]	Pipe diameter		Flange diameter		Elbow diameter		Length [mm]	Width [mm]	Height [mm]	Height to the pipe axis		Rotation speed mm/min	Weight [kg]
		[ca]		[mm]		[ca]					[mm]			
		Dp	Df	De	Hc	pot.								
		Min	Max	Min	Max	Min	Max	L	W	H	min	max		
MPP-1	0,75	4	24	80	700	4	24	2100	1000	2000	800	1060	125-1250	1100
MPP-1,5	1,5	4	24	80	700	4	24	2100	1200	2250	1050	1310	125-1250	1250
MPP-3	3	4	24	80	700	4	24	2100	1400	2500	1300	1560	125-1250	1400